

FASTRAK School Meal Software

School Meal Program (ScMP) Technology for Front of the House

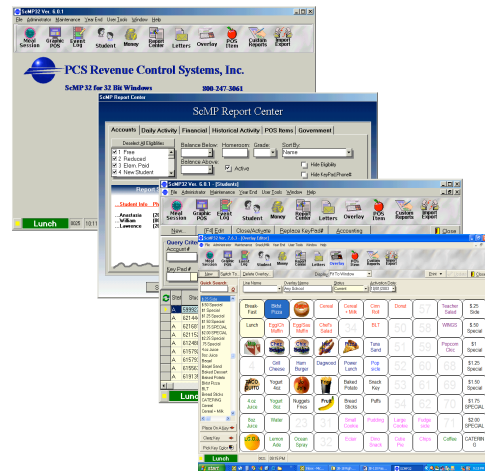
FASTRAK School Meal Software is the most stable and versatile POS software solution available. Manage student accounts effortlessly - open and close accounts, accept pre-payments, update eligibility status, and send balance status letters home.

FASTRAK is easy to use and features “one key operation” for receiving enrollment and menu updates from the Central Office, printing daily reports, and sending meal counts, revenues, and deposits to accounting. Built-in flexibility supports single or multi-line POS operation, keypads or cards (or both), smart terminals or touch screen PCs (or both), network and serial communications and “hands free” express or full service cashier operation.

FASTRAK can run stand-alone with up to 36 lines per school or integrated with our **RIGHTRAK District Meal Software Suite** for Central Office. In addition, PCS gives you the flexibility of a POS “card” system or POS “cardless” system with either roster or numeric keypad and/or barcode scanner!

Features

- ✓ Reduces Paperwork and errors
- ✓ Frees up Staff Time
- ✓ Provides **Reimbursement Claim Reports**
- ✓ Provides **Edit Check Reports**
- ✓ Provides **Full Audit Trail**
- ✓ Ability to create custom financial reports
- ✓ Menu Item Management
- ✓ Keyboard menu design
- ✓ Supports multiple menu/overlays per day
- ✓ Supports two simultaneous student meal code entries
- ✓ Supports various input devices (keypad, scanners, etc.)
- ✓ Flexible Modes of Operation to fit any serving line situation
- ✓ ‘Offer vs. Serve’ modes with itemization
- ✓ **Off-line sales** -catering and vending
- ✓ Automated Communications with District Office
- ✓ After School **Snack Program**
- ✓ Calculate **Meals Per Labor Hour**
- ✓ Set spending limits by student (by meal session)
- ✓ Create dietary and allergy warnings for cashiers via POS
- ✓ Seamless Integration with Internet Prepayments
- ✓ Seamless Integration with ANY enrollment system



Minimum Application Requirements

FASTRAK SCHOOL MEAL SOFTWARE	
Processor	Pentium III, 933mHz (P4, 1.5GHz recommended)
Operating System	Win 98/NT/2000/XP
Memory	256 MB (512 MB recommended)
Hard Drive	3 GB (program only)
Display	SVGA 800x600 (1024x768 recommended)
Printer	Windows compatible printer
Sound	Microsoft Windows Compatible **
Network	10/100 Network Card, TCP/IP, IPX/SPX*
Remote Diagnostics	Citrix via Internet Connection
Part Number 010FTScMP	

* School Districts with no LAN/WAN communication please contact to discuss alternative solutions.

** A sound card is strongly suggested to support automated voice feature.

Please call us for more information or visit our website at www.pcsRCS.com

PCS! YOU CAN COUNT ON US!

PCS REVENUE CONTROL SYSTEMS, INC.
560 Sylvan Avenue, Englewood Cliffs, NJ 07632

T 1-800-247-3061 T 1-201-568-8300
F 1-201-568-8381 E weCare@pcsRCS.com